

# ANNUAL REPORT 2021



NEW NATURE

KLASSIK  
STIFTUNG  
WEIMAR



# CONTENT

Cultural Lab in a Changing Society

---

1

NEW NATURE Theme Year – a Programme for everyone

---

2

The Foundation at a Glance

---

6

Impact Report

---

9

# CULTURAL LAB IN A CHANGING SOCIETY

Dr Ulrike Lorenz  
President of the Foundation

As a publicly funded cultural institution with 30 museums, poet residences, castles, parks, libraries and archives, the Klassik Stiftung Weimar bears an important social responsibility. Cultural heritage must constantly be reclaimed and reinterpreted. Only in this way can we keep it alive, uncover its surprising facets, allow it to change, and allow it to change us. That which we fail to extract today from the quarry of history is sure to be forgotten by future generations and may never be used to shape lifestyles or inform worldviews. We are the translators of yesterday for tomorrow's audiences. And we introduce the historic dimensions and creativity of the liberal arts into contemporary debates.

This is why we are working to become more open and accessible, and yes, more political. We see ourselves as a mediator of social coexistence and transformation. We tell fascinating stories, allow visitors to sensually experience our shared history, and work to critically appropriate our cultural heritage. We are a public institution open to everyone – for encounters, exchange and reflection – a place where people can exercise differentiation and discernment. Our core competence lies in innovating, experimenting and constantly seeking new approaches.

We began our journey in 2021 with the NEW NATURE Theme Year, jointly carried out by all the departments at the Foundation. Based on the challenges that climate change poses to our UNESCO World Heritage Sites, we opened the Green Lab, a new meeting place under the open sky in the historic Park on the Ilm. Never have we seen a more diverse audience, and never have we enjoyed such close contact with our visitors. The lab and open stage will be relocating for the next few years to the Weimar City Castle. At Belvedere Castle, the Roman House and the Wittumspalais, we secured space to provide our visitors with new services and formats free of charge – all examples of how we envision “intelligent recreation”, i.e. relaxed, spontaneous and with no thresholds.

The next step on our path to more openness and transparency is this first annual report. We wish to inform the public about what we have concretely achieved for you, and for everyone's sake. By shedding light on our programme and activities this past year from an impact-oriented perspective – namely, your perspective as visitors and users of the Klassik Stiftung Weimar – we take our social function as a perceptive cultural producer seriously.



# NEW NATURE THEME YEAR – A PROGRAMME FOR EVERYONE

Dr Folker Metzger  
Theme Year project manager

“These are programmes by the Klassik Stiftung Weimar?” It was a question we heard quite frequently during the past year. It proved that our NEW NATURE Theme Year had truly captivated our visitors and the public in a surprisingly different way and engaged them in dialogue. Encouraging visitor participation was just as important to us as interconnecting our collections and historic sites to the city, parks and gardens. To this end, we developed enlightening, sensory-based formats, especially those which would promote a sense of community.



Theme-based walks through the Park on the Ilm



Weekend mini golf at Belvedere Castle Park

GREATER  
EMPHASIS ON  
CONTEMPORARY  
ISSUES AND  
ACTIVE PUBLIC  
ENGAGEMENT



Evening programme at the Green Lab

The title NEW NATURE emphasises our approach to exploring issues of greater contemporary and political relevance. In this case, “new” has a dual meaning. Around 1800, engaging in communion with nature was a radically new concept, something that visitors today can experience first-hand in the English-style landscape gardens. Our current relationship to nature, however, is also new to us – one so influenced by humans that nature seems to defy our attempts to control it. Against this background, the Park on the Ilm became the focal point of our activities for the first time in 2021, together with the exhibition I HATE NATURE!.

It was the first time that we enabled visitors to understand and experience the social and educational policies inscribed in the historical design of the park – i.e. the park as both a public place and venue for aesthetic refinement and social rituals. The central location, the Green Lab, was situated in the middle of the park. It featured interactive stations and educational activities and served as a place for recreation and social events. The Green Lab also ventured off the beaten touristic path to selected districts in Weimar in the form of mobile pop-up workshops on specially mounted cargo bicycles. In the now admission-free Roman House and pavilion room of Belvedere Castle, interactive park models convey the exciting stories and historical development of Weimar’s parks and gardens. New radio plays in the Weimar+ app direct visitors to important outdoor sites for the first time, offer a sensual experience and raise awareness of the incredible care that goes into maintaining the parks. With all these programmes, we hope to reach families and people who haven’t yet visited the museums and historical sites of the Klassik Stiftung Weimar. As our analyses and visitor surveys indicate, we have been successful in engaging with Weimar’s guests and residents alike.

Our NEW NATURE Theme Year tied the garden library holdings of the Herzogin Anna Amalia Bibliothek to the historical park landscapes. These, in turn, were presented in connection to Goethe’s natural history collections and works of literature at the Goethe- und Schiller-Archiv. The connection to modernism was presented in exhibitions on Lyonel Feininger’s bicycle tours and Nietzsche’s long walks through nature, and its history dating to the early modern era was represented by the spectacular illustrations in the Codex Kentmanus at the Herzogin Anna Amalia Bibliothek. Our experience with this project has confirmed our conviction that by highlighting selected themes and their connection to various sites and collections of the Klassik Stiftung Weimar, not only can we invite those who happen to stroll by, but also families with children to discover, explore and enjoy what Weimar has to offer, and inspire them to engage in dialogue with one another.



Virtual exhibition at [www.klassik-stiftung.de/ich-hasse-die-natur](http://www.klassik-stiftung.de/ich-hasse-die-natur) (German only)

## NEW PATHS TO SUSTAINABILITY



Exploring the Park on the Ilm and Belvedere Castle Park with the Weimar+ app

Ninety percent of our activities were implemented with sustainability and permanence in mind. Our programme was accompanied by comprehensive historic preservation measures, including the redesign of four entrances to the Park on the Ilm, carried out in accordance with monument preservation guidelines. A new park guidance system emphasises the significance of Weimar's historical park grounds as an integral part of its UNESCO World Heritage Sites and supports easier access for the disabled. At Belvedere Castle, a new information centre opened, and the new permanent exhibition GUARDIANS OF THE GOLDEN APPLES highlighted the history of the Orangery. Important parts of Ettersburg Castle Park have been redesigned based on historical models, allowing visitors to experience this unique garden artwork as originally intended.

The Foundation launched a publication series entitled IM FOKUS (In Focus), targeted at the broader public. Two new volumes were released on the Park on the Ilm and Belvedere. Applying various methods, we continue to emphasise the importance of our parks and urge everyone to do their part to preserve this cultural heritage. The same applies to families and school classes who have expressed great enthusiasm for our explorer rucksacks. We view our future path as one where monument preservation and cultural education go hand in hand – and sustainably presenting the World Heritage Sites is absolutely essential in this task.

## STIMULATING DEBATES



One of the big surprises of last year was the exhibition I HATE NATURE! which received the DigAMus Award for Best Online Exhibition in the German-speaking countries. The socio-political presentation on the human-nature relationship featured works of contemporary art alongside historical objects and multimedia-staged literary texts. Highlighting such existential themes as illness, death, fear and hubris, the exhibition challenged conventional thinking and sparked immediate debate.

The debate series WEIMAR CONTROVERSIES invited Antje Boetius, Susan Neiman, Luisa Neubauer, Philipp Ruch and Svenja Flaßpöhler to address various issues. In lively discussions held at the Bauhaus Museum Weimar and streamed online, the speakers locked horns with their sometimes very disparate and controversial views regarding our relationship to nature and possible future scenarios. The event series demonstrated that such discursive formats, coupled with Weimar's symbolism and our status as a cross-artistic and interdisciplinary cultural institution are particularly well-suited to shaping democracy, education and a critically-minded public.

With the digital conference WEIMAR IDEAS LAB organised through the NEW EUROPEAN BAUHAUS initiative and the corresponding exhibition, the Klassik Stiftung Weimar was the topic of discussion in the cultural pages of several major newspapers. A television segment produced by the ZDF cultural programme ASPEKTE highlighted culture in times of climate change and how it related to our Theme Year. The broadcast reached a million viewers.

WEIMAR CONTROVERSIES at the Bauhaus Museum Weimar

## FOUNDATION FOR EVERYONE



Goethe's birthday celebration at the Roman House

A key to attracting new and more diverse target groups was the decision to present activities in the parks and public areas in town. The Green Lab served as a prototypical example of this strategy. The highly visible and innovative building was mainly constructed with lumber from climate-damaged park trees and was cleverly integrated into the ruins of the Tempelherrenhaus. By staging live music events and poetry slams in the evenings, we were able to reach a large number of passers-by and chance visitors. Regional artists activated their own networks, and a wine truck at the Green Lab attracted new audiences as well. The programmes, for which we charged no admission fee, e.g. the interactive park models and the exhibition on the Orangery, changed people's cultural habits; numerous guests returned multiple times, accompanied by friends and family.

Our new magazine KLASSISCH MODERN (Classically Modern) vividly presented the entire spectrum of Theme Year events to 160,000 readers. Thanks to a theme-based website with storytelling elements, the Foundation's blog and a supplementary programme brochure, our guests were able to create their own customised programme.

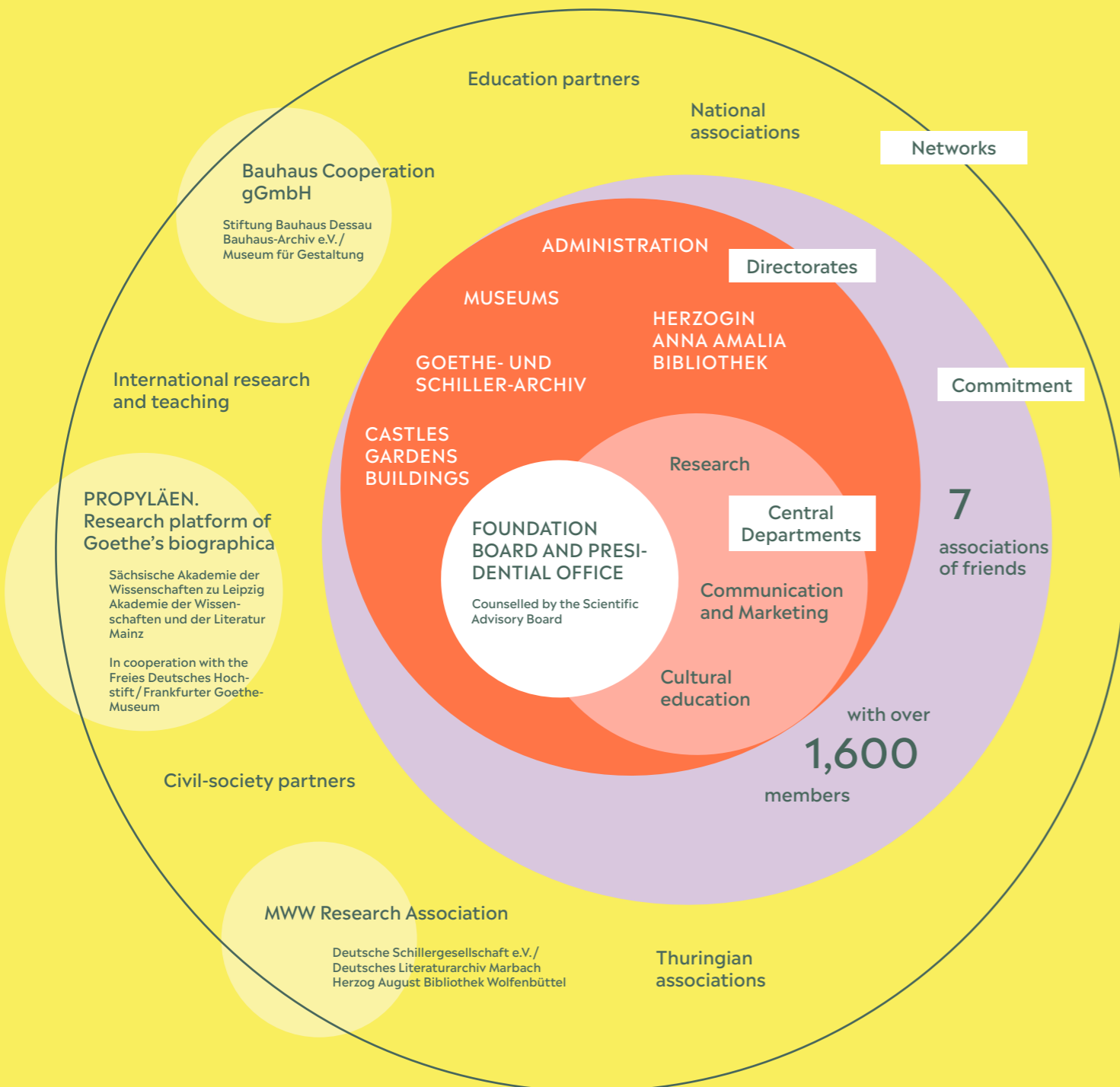
The experiment was a success – at least from our perspective. Together with our partners, we plan to continue developing theme-based programmes in the years to come, and so doing, place the Klassik Stiftung Weimar on a path to growth and transformation.



Out and about with the Green Lab – interacting with visitors in town

# THE FOUNDATION AT A GLANCE

## STRUCTURE AND NETWORKS



## REVENUES AND EXPENDITURES

**383** contracts awarded with a total funding volume of **€ 17.3 mil**

**€ 8.4 mil**

for investments in building and gardening projects

70% of all building and gardening contracts were awarded to companies in Thuringia, 70% of which operate in Weimar and the surrounding region.

**12** contracts awarded to European partners



Selected project funding

2020-2030	Weimar City Castle: Renovation and restoration project with federal (BKM) and state funding (TSK)	2021-2030	Goethe National Museum: 1st renovation planning phase with state funding (TSK)	2019-2024	MWW Research Association with federal funding (BMBF)	2018-2022	Erlebnisportal Weimar - Discover Thuringia, EU funding (ERDF)
2021-2023	Herzogin Anna Amalia Bibliothek: Restoration and conservation of fire-damaged books, music sheets with federal funding (BKM)	2021-2024	Herzogin Anna Amalia Bibliothek: Purchase of research literature with funding from the Carl Friedrich v. Siemens Foundation	2020-2022	BUGA external venues and Theme Year 2021 with EU funding (ERDF)	2021-2022	Cultural education: Cultural Lab Thuringia, funded by the Stiftung Mercator
				2018-2022	Museums: Kennerschaft Heute, funded by the German Research Foundation (DFG)	2020-2023	Museums: MünzeMachtWissen, federal funding (BMBF)

## EMPLOYEES 2021

**425** employees

of whom **62%** female staff

**75%** full-time staff

**25%** project staff

**42%** Museums, Goethe- und Schiller-Archiv, Herzogin Anna Amalia Bibliothek

**15%** Administration

**24%** Gardens, properties, building and monument preservation

**19%** Management and central departments

## OVERVIEW OF OUR COLLECTIONS

> 270,000

objects in the museums

18,000

objects in Goethe's geological collections

11,000

sheets in Goethe's graphic collection

ca. 4,800

sheets in the Bauhaus Collection

> 150 ha

gardens and park grounds

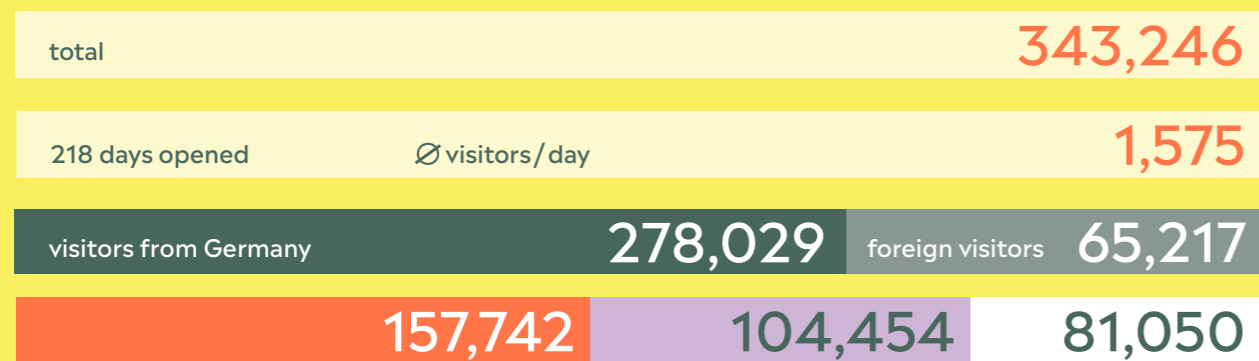
12

bridges

10,000

trees

## VISITORS IN THE PANDEMIC YEAR 2021



Museums of Weimar Classicism, Herzogin Anna Amalia Bibliothek and Goethe- und Schiller-Archiv

Museums of modernism and Bauhaus

Castles and gardens

12th/13th century

oldest building section

74

buildings

2021

newest building

> 1.15 mil

volumes in the Herzogin Anna Amalia Bibliothek

515,895

e-resources

106,351

image sources in the Fotothek

3.5 mil

digitalised scans

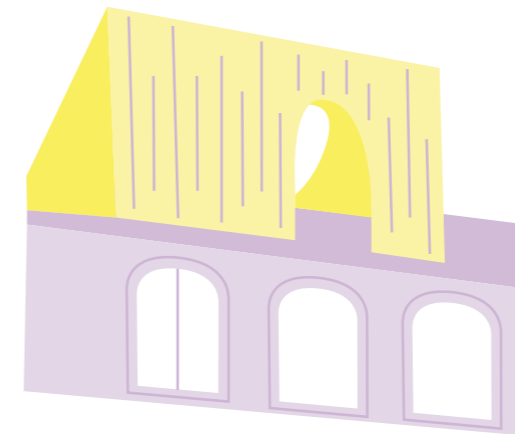
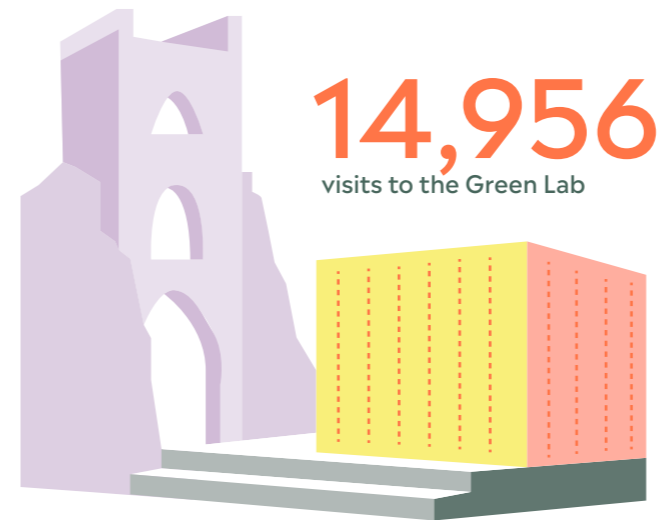
> 5 mil

sheets in the Goethe- und Schiller-Archiv

407,000

digitalised scans

## IMPACT REPORT



## DESIGNING HYBRID SITES AS PUBLIC VENUES



Combining information services and quality of stay

Creating inviting venues with no entrance fees

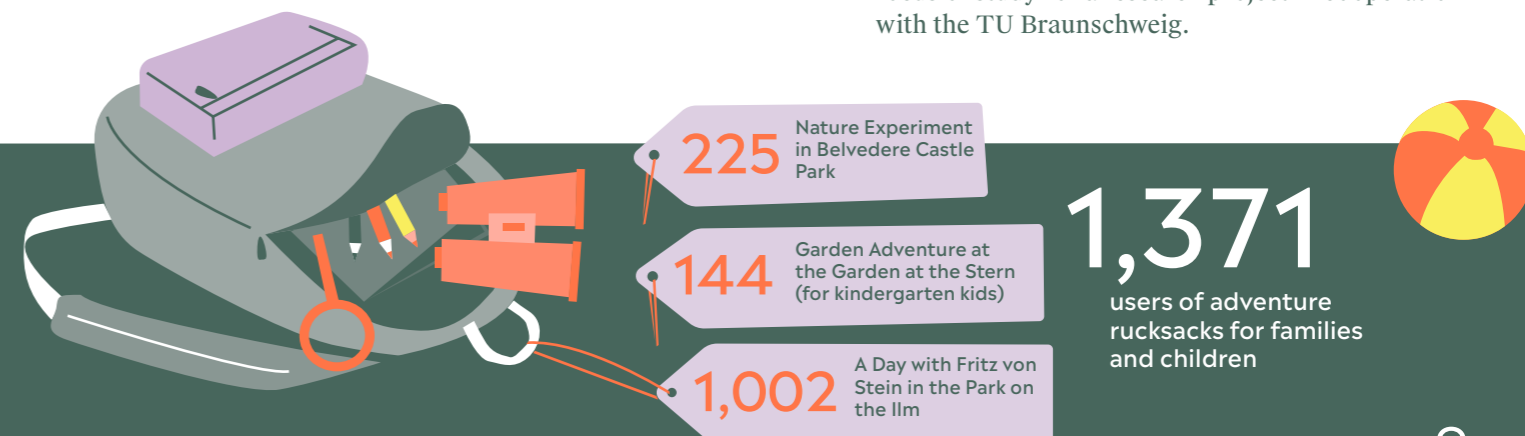
Presenting thematic contexts in reference to historical sites

Encouraging museum visits and dismantling barriers

### Innovative building projects

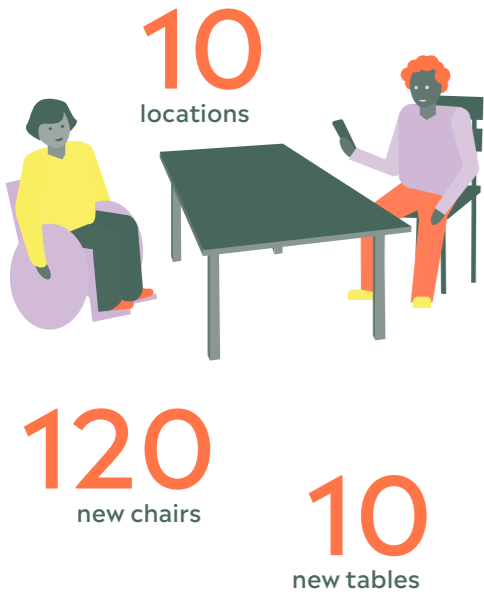
The Green Lab in the Park on the Ilm and the Erlebnisportal Weimar at the Herzogin Anna Amalia Bibliothek were designed as temporary structures using sustainable raw materials and unconventional building methods. In cooperation with the planning offices Studio Boom and HB/A, the Foundation helped finance two experimental buildings which demonstrated that trees offer more than standardised lumber. The birch bark facade of the Erlebnisportal Weimar will be the focus of study for a research project in cooperation with the TU Braunschweig.

## DISCOVERING WEIMAR AND LEARNING TOGETHER



# PARKS AND GARDENS IN THE THEME YEAR

Extensive cultivation and maintenance projects were carried out in six parks and gardens in preparation of the German Federal Garden Show (BUGA) and the 2021 Theme Year. For example, the renovation of the ground-floor west and east wings of Ettersburg Castle was completed in May 2021. The service quality was improved at all the locations, e.g. with the installation of a new guidance system, park toilets, bicycle stands and refurbished park entrances. All the projects were designed to enable visitors to experience the historical park landscapes and to generate appreciation and awareness of our collective responsibility to preserve our cultural heritage.



## NEW QUALITY OF STAY UNDER THE OPEN SKY

Park Service Team between 12 Aug. & 7 Nov. 2021

**99** deployments

**483** hours

Goal: Create spaces for visitor recreation and communication

Furniture was installed in parks, at entrances and in museum courtyards

Park Service team was formed to interact with visitors and increase awareness of the UNESCO World Heritage Site.

Enhanced communication among visitors and with the Klassik Stiftung Weimar

## MUSEUM EDUCATION PROJECTS

Practical and project-oriented programmes for schools

Opportunities to pursue self-determined activities and sensorial-aesthetic experiences

Exploring history and contemporary issues

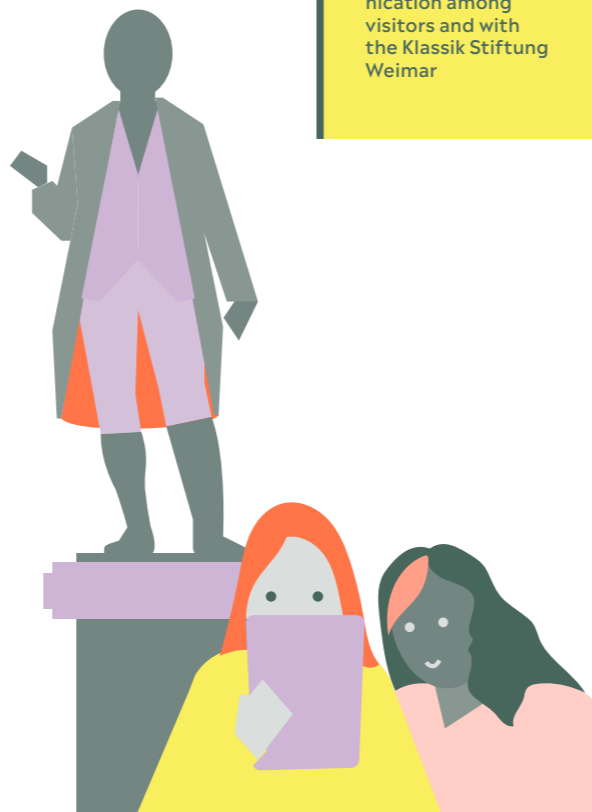
Sustainable and self-reflective learning

Repeated queries from schools to consider even longer project periods

**568** participants in 40 activity-oriented short-format programmes

**408** participants in 33 project day programmes

**481** participants in 39 multiple-day education projects



# NEW NATURE PROGRAMME

THINKING UNDER THE OPEN SKY  
Photos of Nietzsche's Nature

17 Apr. – 3 Oct. 2021  
Nietzsche-Archiv

I HATE NATURE!  
Human – Nature – Future

17 Apr. – 26 Sep. 2021

LANDSCAPES IN LIGHT  
The Impressionist  
Ludwig von Gleichen-Rußwurm

23 Oct. 2021 – 16 Jan. 2022  
Schiller Museum

FORMS OF NATURE  
Jugendstil ceramic works  
by Henry van de Velde

17 Apr. – 31 Oct. 2022  
Haus Hohe Pappeln

BAUHAUS AND NATURE:  
Lyonel Feininger – Out  
and About on his Bicycle

17 Apr. – 9 Aug. 2021  
Bauhaus Museum Weimar

NATURE ON PAPER  
10 Sep. – 19 Dec. 2021  
Goethe- und  
Schiller-Archiv

COUNTRY. RIVER. KENTMANUS.  
Study of Nature in the 16th Century

17 Apr. – 1 Nov. 2021  
Herzogin Anna Amalia  
Bibliothek

GUARDIANS OF THE GOLDEN APPLES  
300 years of Orangery culture in Weimar

CLIMATE CHANGE IN  
HISTORICAL GARDENS  
opened 5 Jun. 2021  
Belvedere Castle Paark

Goal: Update and thematically inter-link the collections and locations

Presentation of special and permanent exhibitions, creation of sustainable digital formats

Improvement of quality of stay

Sustained increase in visitor numbers with permanent exhibitions

## PARTICIPATION THROUGH NEW EVENT FORMATS

**146** analogue events from June to October

**163** events

**17** digital events from April to December

**350** guests from outside Weimar

**49,963** digital guests

**3,968** guests from Weimar

**1,677** guests in museums and the Herzogin Anna Amalia Bibliothek

total guests

**58,249**

**2,291** guests in the parks

Goal: Improve audience reach by increasing presence in outdoor venues

Expansion of target groups to include non-visitors

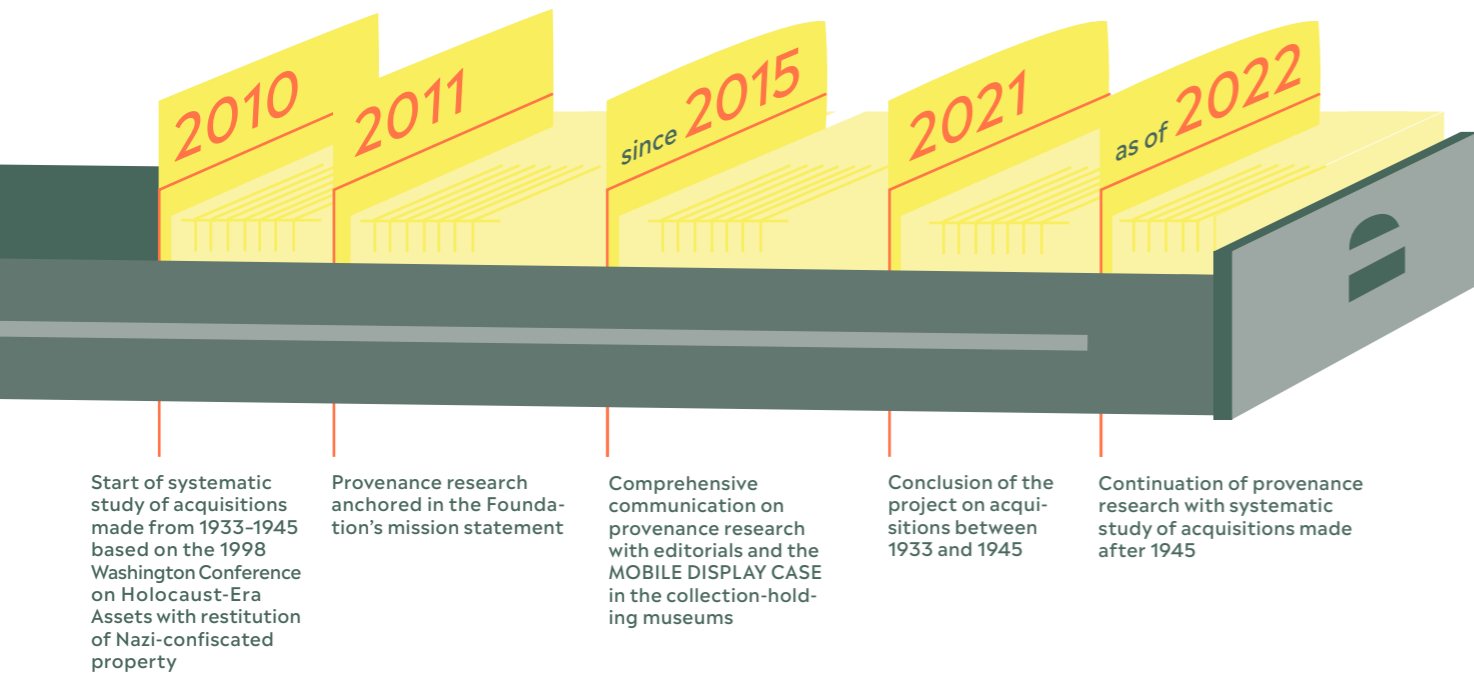
Cooperation with regional partners

Data collection on non-visitors (interests, use of cultural offers etc.) and evaluation of formats

Knowledge and experience integrated into the 2022 programme development

# SEIZURE OF CULTURAL ASSETS IN THE 20TH CENTURY

In search of fair and just solutions



# THE FOUNDATION AS AN AGENT FOR SOCIAL AND CULTURAL POLICY

Susanne Schreiber, Handelsblatt, 5 August 2021

“Ulrike Lorenz (...) is dusting off the sacred sites of Classicism and bringing them up to date for the next generation. The goal: Reorientation as an uncontested authority on cultural policy.”

**16 SEP** RE:PRESENT  
Joint event on the German federal election at Stéphane-Hessel-Platz

**13 OCT** HOW DOES ONE LIVE THE GOOD LIFE IN THE ANTHROPOCENE? WEIMAR CONTROVERSIES  
at the Bauhaus Museum Weimar

**9-14 MAY** HOW DO WE WANT TO LIVE? Weimar Ideas Lab on the New European Bauhaus

**24 JUN** WE HAVE TO TALK. Social dialogue at the Green Lab

**7 AUG** SHOW YOUR COLOURS. Municipal programme for an open society – Against racism and exclusion

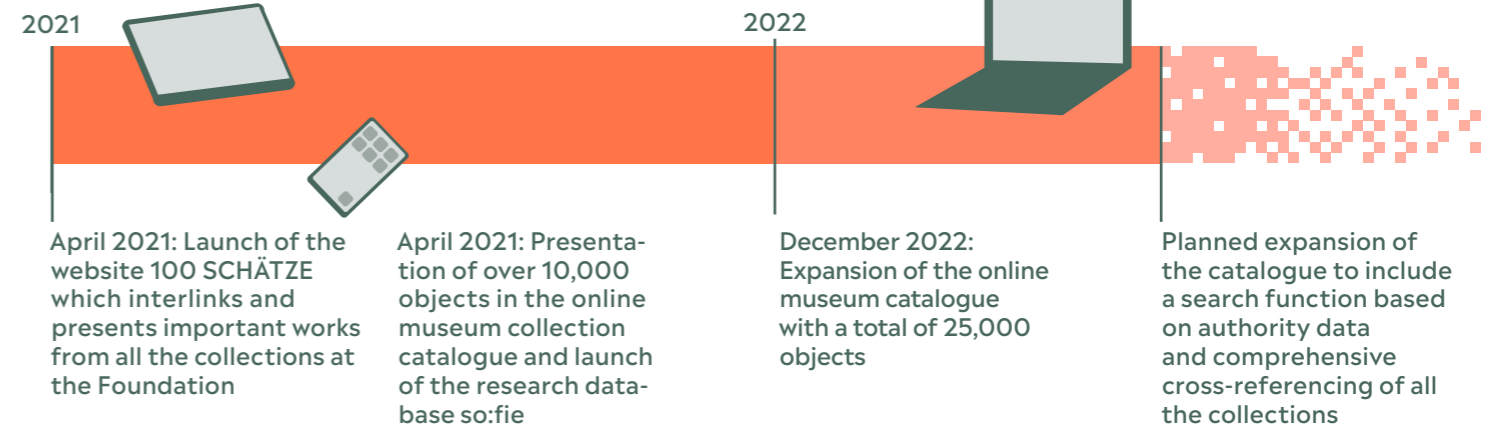
Christian Eger on the exhibition FORGOTTEN BAUHAUS WOMEN, Mitteldeutsche Zeitung, 16 October 2021

“A sensational number: Out of the total 1,253 students who studied at the Bauhaus from 1919 to 1933, 462 were women. This exhibition will surely leave viewers impressed, mostly first-time encounters – a kind of speed-dating that will undoubtedly have a lasting impact. It is remarkable – shocking even – the direction these artistic careers and lives took.”

# DIGITAL TREASURES FOR THE PUBLIC

(German only) [100schaetze.klassik-stiftung.de](https://100schaetze.klassik-stiftung.de)

[www.klassik-stiftung.de/sammlungen-der-museen](https://www.klassik-stiftung.de/sammlungen-der-museen)



[www.klassik-stiftung.de/sofie](https://www.klassik-stiftung.de/sofie)

(German only)

# RESEARCH PRESENTATION

With digital and analogue publications, events and exhibitions, we present our research findings in various public forums. Despite the continuing pandemic in 2021, the Foundation staged 87 in-person, digital and hybrid scientific and academic events, including a 14-day research colloquium, 43 public lectures and 15 workshops and conferences.



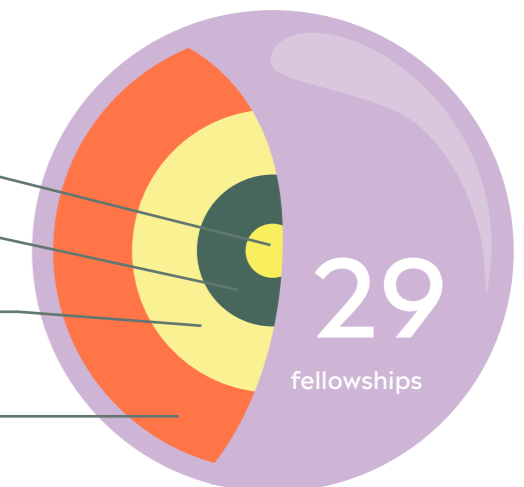
Conference highlight: NATURE AND ECONOMY OF THE “LAST HUMANS” International Nietzsche Conference

More info on our research activities: [www.klassik-stiftung.de/en/research](https://www.klassik-stiftung.de/en/research)

# FELLOWSHIP PROGRAMMES

Promoting junior academics and international networking

- 2 Bauhaus Fellowships for art and design
- 5 MWW Research Association Fellowships
- 10 Weimar Fellowships for collection-related research
- 12 Nietzsche Fellowships for creative humanities



## VISITOR JOURNEY

Communication before, during and after the visit

Targeted advertising and information via digital channels, personal assistance and programme brochures

Communication and presentation around town and at tourist sites as well as accompanying digital media

Follow-up info and personal reminders via publications and souvenirs, also in digital space

Visitors to Weimar become digital users and often come back again

KLASSISCH MODERN magazine

160,000

+ 70% website usage

8,724

Theme Year posters in public space

Distributed flyers & programme brochures

210,000

Online tickets + 50%

Weimar+ app downloads 16,570

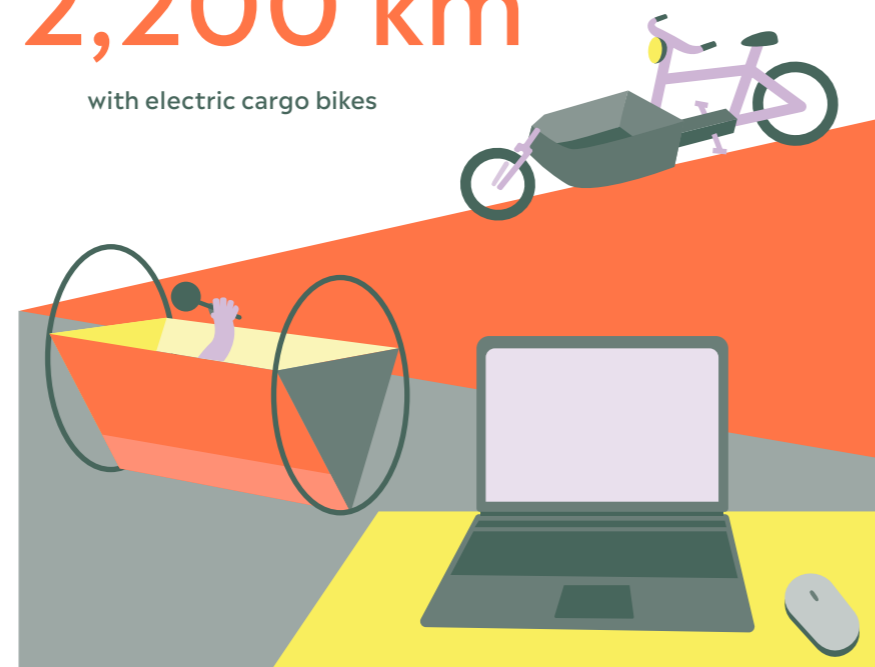
- + 12% Facebook followers
- + 7% Twitter followers
- + 22% Instagram followers
- + 26% Blog visits

## FLEXIBLE WORKING ENVIRONMENT

In 2021 the Foundation achieved important milestones with respect to improving work-life balance, employee productivity and internal communication. Almost 100% of our PC workstations were converted to notebooks, digital administration processes were expanded and digital solutions for video conferences and project teams were established. Thanks to the prompt and careful implementation of IT, HR and administrative activities in digital formats, the Foundation was able to adapt to changing pandemic-related developments. Local commutes and regular deliveries were carried out with our new electric cargo bikes.

2,200 km

with electric cargo bikes



## WEIMAR CITY CASTLE

Preserving history and making the history of ideas legible for the next generation

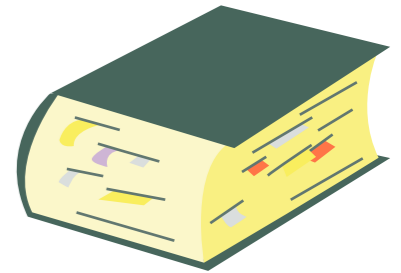
- 2006 Foundation Board commissioned a feasibility study on historical landmark restoration
- 2008 Federal government approved project funding
- 2013 Foundation Board approved the sub-project realisation variant
- 2020 Federal and state agencies approved the historical restoration of the entire castle
- 2021 Important planning steps were completed, along with the restoration objective and fire protection concept

- Implementation of a comprehensive, sustainable concept for carrying out the historical restoration in several sub-projects
- Future use as a museum, civic forum and event venue

## GOETHE RESIDENCE ENSEMBLE

Feasibility study

In cooperation with Wüstenrot Stiftung, a 2021 study bundled a variety of information on the history of the Goethe Residence, the adjacent museum and garden, a damage analysis of the building substance, studies on the building climate and technical systems, as well as recommendations on maintaining and improving the building complex. It serves as the basis for planning and carrying out the historical restoration and redesign of the museum complex and safeguarding it for future generations.



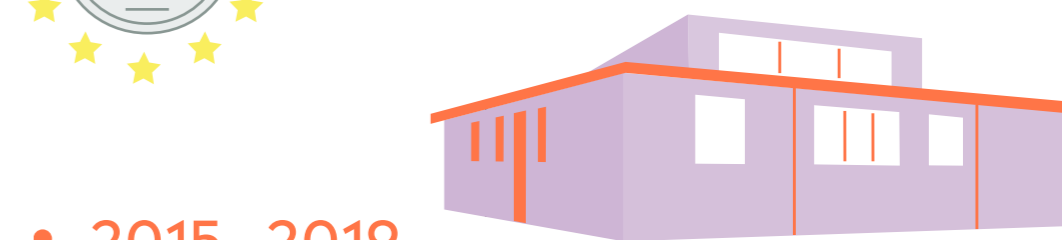
## HAUS AM HORN

Winner of the Europa Nostra Award



“The restoration of the Haus Am Horn is based on research and an understanding and respect for the authenticity of the building and its original materials. (...) The fixtures and fittings are presented with a novel approach.”

Europa Nostra Award 2021, jury statement



- 2015 - 2019 extensive building research, restoration and museological development
- May 2019 reopened with a new permanent exhibition and landscape design
- September 2021 awarded the Europa Nostra Award, only prizewinner in the German-speaking region

## CASTLES, GARDENS AND BUILDINGS

### HISTORIC PRESERVATION GOALS FOR TIEFURT MANSION PARK

A milestone for future use

When it comes to preserving historic parks, there are always new questions that arise regarding maintenance, landscaping and usage. To this end, it is essential to study the historical record and investigate the historical substance on the basis of scientific criteria. The Klassik Stiftung Weimar achieved this objective in 2021 by finalising the historic preservation goals of Tiefurt Mansion Park. It serves as the basis for preserving, renovating and presenting the park to future generations.

Young European Summer School at the Wieland Estate in Ossmannstedt

### WITTUMSPALAIS WEIMAR

A courtyard invites you to stay



The courtyard of the Wittumspalais is a hidden gem in downtown Weimar. The courtyard furniture and newly installed event infrastructure have reinvigorated the courtyard since September 2021. The museum lobby was redesigned to reflect a welcoming culture and was refurbished to function as a central meeting point for guided tours through Weimar.

### EDUCATION CENTRE WIELAND ESTATE IN OSSMANNSTEDT

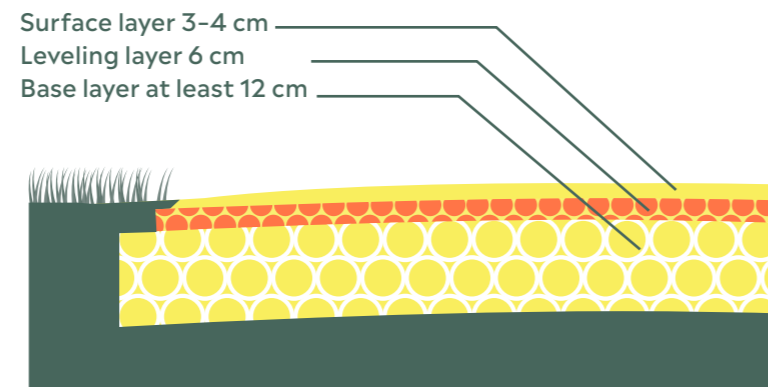
Ready to welcome new user groups

The interior rooms of the baroque manor were re-designed and refitted with fire protection upgrades. Thanks to these measures completed in June 2021, the Wieland Estate in Ossmannstedt now offers a high-quality, modern learning environment for educational events with individually designed accommodation and comfortable common rooms.



### PATH CONSTRUCTION

Steps toward sustainable restoration



Profile of a water-bound path surface

The paths in the Park on the Ilm have to meet very high standards – both in terms of design and function. Because damage seems to be increasing every year, not only was it necessary to repair certain sections, but to clarify how best to sustainably construct paths in the future. Using test surfaces and analyses, a comprehensive set of measures was developed for implementation by 2024.

## MUSEUMS

### REMBRANDT X-RAYED!

Since 2018 the research project KENNERSCHAFT HEUTE has been investigating drawings from the Weimar Graphic Collections. Using non-destructive, material-scientific methods, such as X-ray scanning, researchers can differentiate between various materials and types of paper in selected works, e.g. by Rembrandt, his employees and students. With the project set to conclude in 2022, researchers have developed objective and comparative criteria which will help make art-historical classification and dating more precise.



Researchers investigate a Cranach drawing using X-ray fluorescence analysis

### “I HATE NATURE!”

Winner of the 2021 DigAMusAward for best digital exhibition in the German-speaking region

“Congratulations on this first-class online exhibition! The interplay of objects, texts and sound produces an extraordinary, very sumptuous, personal experience (...). The viewer feels comfortable in the online exhibition, it is entertaining, and at the same time, plays with strong emotions and presents complex works. An entirely successful project.”

Excerpt from the laudation by David Vuillaume, managing director of the German Museums Association

## MÜNZE.MACHT.WISSEN

Digitalisation of the collection of coins and medals of the Klassik Stiftung Weimar

2021



Creation of pre-structured datasets, investigation of old inventories and integration into and cross-referencing with datasets

2022



Assembly of a digitalisation process with camera and integrated scale, and start of digitalisation

2023



Online presentation of 26,000 coins and medals for the benefit of object and collection research and networking with museum collections worldwide

### ACQUISITION OF COLLECTIONS BY HENRY VAN DE VELDE, MIES VAN DER ROHE AND AFFILIATES

Metal objects	181
Ceramics	85
Furnishings	38

304 objects



Barcelona Chair by Mies van der Rohe, 1929

# GOETHE- UND SCHILLER-ARCHIV



View of the exhibition room at the Goethe- und Schiller-Archiv

## THE OPEN ARCHIVE: DIGITAL AND ANALOGUE USERS

**1.7 mil**

archive database search queries

**150**

active users in the reading room

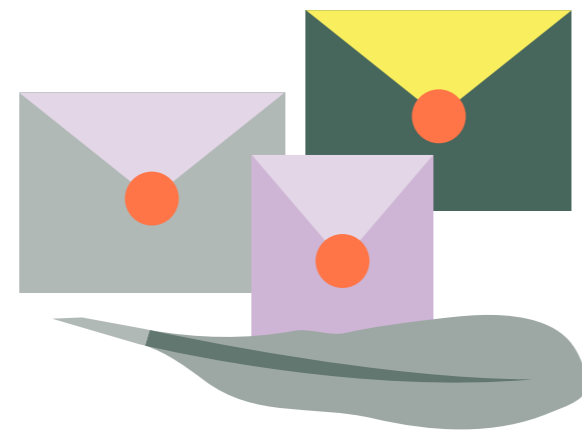
**+45,000**

digitalised scans

(total holdings: 407,000)

## COMPETENCE CENTRE FOR DIGITAL EDITIONS

Since its early days, the Goethe- und Schiller-Archiv has been known for its outstanding modern German Studies editions, especially on Goethe and Schiller. For the past several years, the archive has been actively developing its digital editorial activities. The research platform PROPYLÄEN, which launched as a beta version in October 2021, combines biographical documents related to Goethe's life and works from four print editions, published by our institute: letters from Goethe, letters to Goethe, his diaries and other records of his encounters and discussions. This long-term project, slated for completion in 2039, will lay the groundwork for philological, philosophical, idea-based, cultural and scientific-historical research on the late 18th and early 19th century.



[www.goethe-biographica.de/](http://www.goethe-biographica.de/) | 🔍

(German only)

### Documents

- Young Goethe (1749–1775)
- First decade in Weimar (1775–1786)
- Italian Journey, Effects of the French Revolution (1786–1797)
- Weimar Classicism (1798–1806)
- Epoch of "Elective Affinities" and "Colour Theory" (1807–1814)
- "Divan"-Years (1814–1819)
- Years of Autobiographical Writings (1820–1826)
- Final Years (1827–1832)

**2021** **2024** **2027** **2030** **2033** **2036** **2039**

### Functions

- Beta version of the platform
- Provision of XML research data, expansion of research functionality
- Provision of enhanced text-recognition and visualisation tools

**PROPYLÄEN**

# HERZOGIN ANNA AMALIA BIBLIOTHEK

Identified and restored ash books in 2021

**374**

volumes with

**43,731**

sheets



Restored plates in HERRN VON BÜFFONS NATURGESCHICHTE DER VIERFÜßIGEN THIERE, vol. 8, Berlin, 1783

## RESTORATION AFTER THE FIRE

Conservation and transformation

Preventative and conservation measures

**49,175**

Stabilising conservation measures

**21,431**

Restorative measures

**39,632**

Bookbinding measures

**1,736**



Reconstruction of fragmented double-leaf sheets in the leaf-casting machine

## KNOWLEDGE FORUM LIBRARY

Service, information and presentation

**2.58 mil**

research queries in the online catalogue

Active users

**3,634**

Online users of digital collections and e-media

**80,561**

Books borrowed

**54,709**

Exhibitions, events and presentations

**52**

Insights into the collections and activities

[www.klassik-stiftung.de/herzogin-anna-amalia-bibliothek](http://www.klassik-stiftung.de/herzogin-anna-amalia-bibliothek) | 🔍

## COLLECTION STRUCTURE

New analogue and digital acquisitions

**+9,526**

books and journals  
(total holdings: 1.15 mil)

**+60,206**

e-books, e-journals and databases  
(total holdings: 515,895)



## DATA PRODUCTION FOR PUBLIC USE

Indexing and digitalisation

**+219,473**

digitalised scans  
(total holdings: 3.5 mil)

**+13,297**

image sources in the Fotothek  
(total holdings: 119,648)

# IMPRINT

The Annual Report provides exemplary insights into the processes and projects conducted in the 2021 reporting year. It serves as an impact report in line with the Social Report Standard (SRS).

If you wish to forward or distribute additional copies, please use the digital form of the Annual Report (available in German or English).



[www.klassik-stiftung.de/jahresbericht](http://www.klassik-stiftung.de/jahresbericht) | 🔍

[www.klassik-stiftung.de/annual-report](http://www.klassik-stiftung.de/annual-report) | 🔍

**Published by**  
Klassik Stiftung Weimar  
Burgplatz 4  
99423 Weimar  
T +49 3643 5450  
info@klassik-stiftung.de

[www.klassik-stiftung.de/en](http://www.klassik-stiftung.de/en)

**Authorised representative**  
The Klassik Stiftung Weimar is legally represented by its president, Ms Ulrike Lorenz (responsible for the content).

**Project team**  
Regina Cosenza Arango (project manager),  
Claudia Ermann, Manuela Wege

**Editorial team**  
Arno Barnert, Katharina Decker, Susanne Dieckmann,  
Sophia Gröschke, Helmut Heit, Stephan Herbarth,  
Cornelia Irmisch, Folker Metzger, Silke Müller,  
Andreas Schlüter, Marc Steinhäuser, Patrick Will

**Translation** Robert Brambeer

**Copy deadline** 22.02.2022

**Design and illustrations**  
Hüftstern | Büro\*Gemeinschaft für visuelle Gestaltung  
Carolin Klemm, Hannah Meyer  
<https://hueftstern.com>

**Photo credits**  
Front cover © Klassik Stiftung Weimar, illustration:  
Hüftstern | p. 2 top, 3, 4 top, 5, 18 © Klassik Stiftung  
Weimar, photographer: Henry Sowinski | p. 2 bottom,  
4 bottom, 19 © Klassik Stiftung Weimar | p. 16  
© Klassik Stiftung Weimar, photographer: Isabelle  
Castera | p. 17 bottom VG BildKunst 2022 | p. 17 top  
© Klassik Stiftung Weimar, photographer: Thomas  
Müller | back cover © Klassik Stiftung Weimar,  
photographer: Marcus Schwier

**Printed by**  
Buch- und Kunstdruckerei Keßler GmbH

The Annual Report is printed on FSC Mix Paper produced from FSC-certified forests and recycled materials. All CO2 emissions released in connection to its production are compensated with the support of certified climate protection projects through ClimatePartner. Climate neutral shipping and delivery.



**Copyright information**  
All texts, images and graphic depictions contained in the Annual Report 2021 are subject to copyright law. When using content and/or graphic elements, please always cite the original source [www.klassik-stiftung.de/annual-report](http://www.klassik-stiftung.de/annual-report) and copyright holder © Klassik Stiftung Weimar.



Restoration of the Castle chapel

-  [facebook.com/KlassikStiftungWeimar](https://facebook.com/KlassikStiftungWeimar)
-  [instagram.com/klassikstiftung](https://instagram.com/klassikstiftung)
-  [www.klassik-stiftung.de/youtube](https://www.klassik-stiftung.de/youtube)
-  [twitter.com/KlassikStiftung](https://twitter.com/KlassikStiftung)

[www.klassik-stiftung.de/en](https://www.klassik-stiftung.de/en)

The Klassik Stiftung Weimar is financed by the German Federal Commissioner for Culture and the Media upon resolution of the German Bundestag, the Free State of Thuringia and the city of Weimar.



State Chancellery



The BUGA external venues and the NEW NATURE Theme Year 2021 were financed by the European Regional Development Fund.